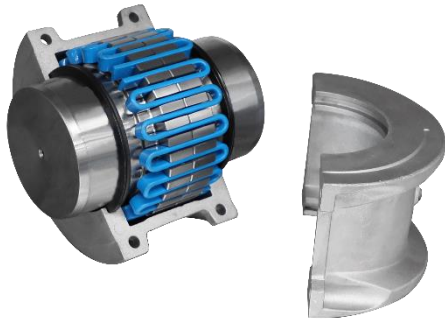


GR Series Horizontal Grid Couplings



GR Series Horizontal Grid Couplings

- The Grid coupling is an ideal coupling for
- applications where excellent performance is desired and
- additional requirements for vibration dampening may
- exist. The Horizontal Split Cover design is recommended
- in applications where there may be some constraints
- on the diameter of the coupling. The vertical design is
- recommended for applications where higher speed is one
- of the requirements.

Features:

- Designed for ease of maintenance and grid spring replacement
- High tensile grid springs ensure superior coupling performance and longer coupling life
- Split covers allow for easy access to grid springs
- Interchangeable with industry standard grid couplings

Gear Coupling



The gear coupling is composed of inner gear ring with the same number of teeth and flange semi-coupling with outer teeth and other parts.

- Double Engagement with bolts
- Material: Carbon steel
- Treatment: Carbon steel quenching
- Finish: Anti-rust Oil, Painting, Blacken, Electrophoresis, Other
- Standard: ANSI, ISO, JIS

Curved Jaw Couplings



CJ Standard Type

It consists of 2 HB type standard hubs (style A, style B or style BX), 1 elastomer and set screws. The types of hubs include:

- Type HB1, cylindrical bore, feature keyway, with set screw.
- Type HB2, cylindrical bore, without feature keyway, with set screw.

- Type HB3, with spline bore.

- Size: 38-180mm
- Finished Bore: Max 200mm
- Rated Torque: Up to 35,000N.m
- Material: Powder Metal, Cast Iron, Ductile Iron
- Surface: Oil, Blacked, Painting, Electrophoresis, other.



CJ Standard | Aluminum Alloy

It consists of 2 HB type standard hubs (style A, style B or style BX), 1 elastomer and set screws. The types of hubs include:

- Type HB1, cylindrical bore, feather keyway, with set screw.
- Type HB2, cylindrical bore, without feather keyway, with set screw.

- Type HB3, with spline bore.

- Size: 14-48mm
- Finished Bore: Max 62mm
- Rated Torque: Up to 655N.m
- Hub Material: Aluminum alloy
- Finish: Deactivation



CJ Standard | Stainless Steel

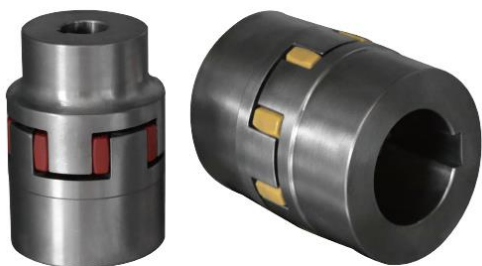
It consists of 2 HB type standard hubs (style A, style B or style BX), 1 elastomer and set screws. The types of hubs include:

- Type HB1, cylindrical bore, feather keyway, with set screw.
- Type HB2, cylindrical bore, without feather keyway, with set screw.

- Type HB3, with spline bore.

- Size: 14-48mm
- Finished Bore: Max 62mm
- Rated Torque: Up to 655N.m
- Hub Material: Stainless Steel
- Finish: Deactivation

Curved Jaw Couplings



CJ Standard | Steel Type

It consists of 2 HB type standard hubs (style A style B or style BX), 1 elastomer and set screws. The types of hubs, Include:

- Type HB1, cylindrical bore, feather keyway, with set screw.
- Type HB2, cylindrical bore, without feather keyway, with set screw.
- Type HB3, with spline bore.
- Size: 14-180mm
- Finished Bore: Max 200mm
- Rated Torque: Up to 35,000N.m.
- Hub Material: Carbon steel
- Finish: Anti-rust Oil, Painting, Blacken, Electrophoresis, Other



Lined Jaw Couplings

- Size: L050-L276
- Torque: 3.0-533.0N.m(NBR)
- Finished Bore Size: 16-73mm

Part Material

- Hub: powder Metal, Carbon steel.
- Elastomer: Rubber, polyurethane.



M Series Disc Couplings

- Size: 90-505
- Torque : 600-334,000 N.m
- Finished bore: Max 190mm